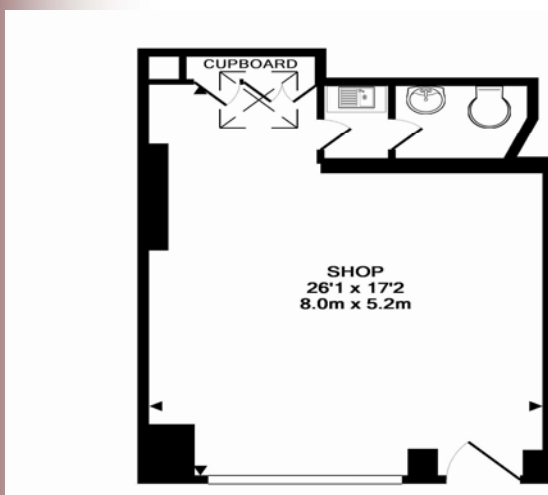


# Gilyard

## Scarth

### Commercial



#### Energy Performance Asset Rating

More energy efficient

**A+**

Net zero CO<sub>2</sub> emissions

**A** 0-25

**B** 26-50

**C** 51-75

**D** 76-100

**E** 101-125

**F** 126-150

**G** Over 150

Less energy efficient

**66** This is how energy efficient the building is.

## 39 High Street, Shaftesbury, Dorset

An attractive retail premises in a good trading location

# £13,000 p.a.

